



MONSTER® SMART
ILLUMINESSENCE™

PRISM

3D LED ART PANELS

Modular 4 Panel Starter Kit

QUICK START GUIDE

MLB7-1038-RGB

v1.0 0420

GETTING STARTED

Thank you for choosing the Prism 3D LED Art Panels by Monster Smart Illuminence. This **Quick Start Guide** will help you with the installation of your add-on device.

WHAT'S IN THE BOX

- 2 x Prism LED panels
- 2 x Prism mounting brackets with 3M Command damage-free adhesive (preinstalled on each panel)
- 2 x Prism connectors
- 2 x Replacement 3M Command damage-free adhesive strips
- 1 x Quick Start Guide
- 1 x Design Guide

WHAT DO YOU NEED?

This product is an ADD-ON PACK. It is an expansion to add segments to your existing Prism Starter Kit. If your Prism is already setup, you do not need to reset or repair your controller!



scan for manuals

SET UP YOUR PRISM STARTER KIT FIRST.

If you need assistance with your starter kit, please visit our website to reference the Prism MLB7-1034 quick start guide.

monsterilluminescence.com/manuals/

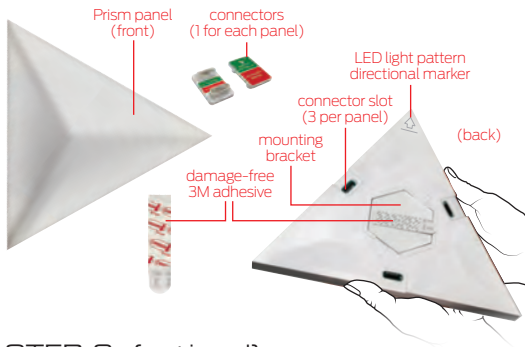
ANYTHING ELSE?

If you really want to be precise during installation, you can use a level, but it's not required.

TIP: Save these instructions for future reference.

STEP 1

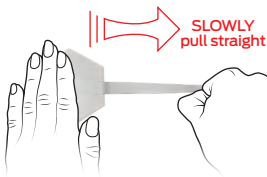
Remove your new Prism panels and all components from the box. Note that the mounting bracket and adhesive tape will be preinstalled on each panel.



STEP 2 (optional)

This kit includes two replacement adhesive strips, so if you want to change your pattern to something new now that you're adding an add-on pack, rotate some panels on their brackets and remove up to two other panels that might need to move.

- Hold the magnet bracket in place.
 - SLOWLY pull on the removal tab, pulling in the direction it points.
 - Pull the tab straight and close to the wall, NEVER towards you.
- Attach a new strip red label side towards the bracket with the pull tab extending past the edge.
 - Reinsert this bracket into the removed segment.

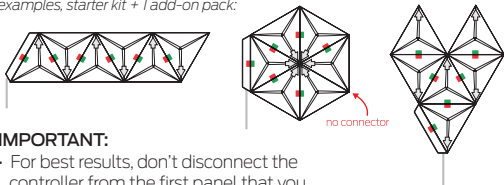


INSTALLATION

STEP 1

Before installing anything, try out different shapes and patterns with your panels on the floor or a large table to decide what you would like to create! **Consult the Design Guide for ideas.**

examples, starter kit + 1 add-on pack:



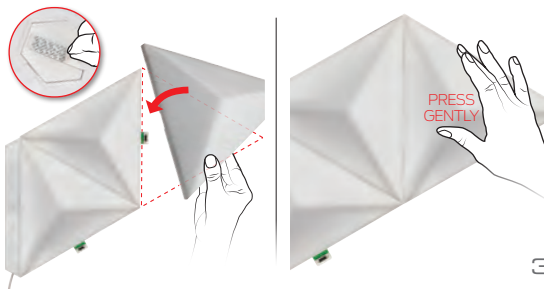
IMPORTANT:

- For best results, don't disconnect the controller from the first panel that you already have installed.
- To ensure all panels light up, make sure all the connectors always point the **GREEN** side **AWAY** from the controller.
- Only one **GREEN** side should ever be connected to a single panel at a time.



STEP 2

First, clean the mounting surface with rubbing alcohol and let dry. When you're ready to start, peel off the adhesive backing from one Prism panel, place the panel on the wall over an open **GREEN** connector, and press gently on the center.

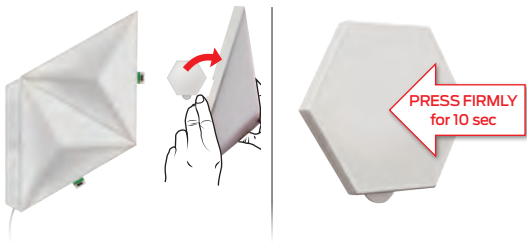


STEP 3

Remove the panel, leaving the bracket in place on the wall.

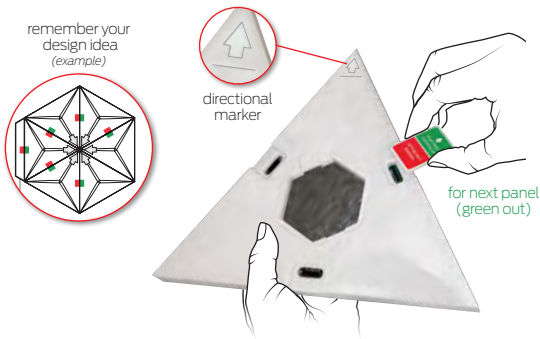
Press firmly on the bracket for 10 seconds to ensure a strong hold.

NOTE: Once additional panels have been added, take extra care to hold down neighboring panels when removing one.



STEP 4

Attach more connectors with the **GREEN** side out as needed for the design. Make sure to insert each connector fully into the slot.



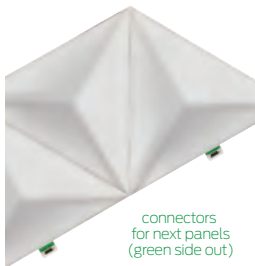
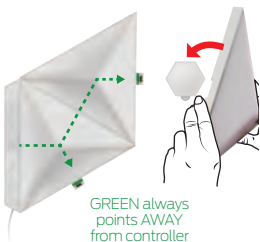
DESIGN TIP:

Pointing the directional markers on the back of each panel towards or away from each other will create different lighting effects when panels are combined. Check that it is pointing in the right direction for your design.

STEP 5

With connector(s) installed, return your panel to the wall by centering it over the mounting bracket and over the open **GREEN** connector so it snaps into place.

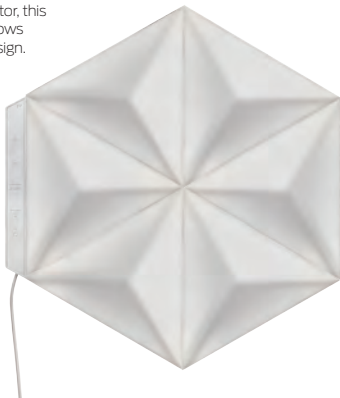
NOTE: Make sure all connections are secure.



STEP 6

Build out your Prism pattern by repeating these steps with more panels and connectors, moving away from the controller.

NOTE: When making a hexagon there will be one pair of panels that will not be linked by a connector, this ensures that the power flows evenly throughout the design.



If your controller is already paired, you're done!

ENJOY!

TROUBLESHOOTING

HAVING TROUBLE WITH SETUP?

Don't return this product to the retailer, we're here to help.

Please call for customer support: 866-246-2008

Q: Why is my device failing to connect to my Wi-Fi network?

A1: Make sure your phone or tablet is successfully connected to the **2.4GHz Wi-Fi network** that your device will be placed on.

A2: You may first need to enable and allow location services on your phone or tablet to find nearby devices.

A3: If your Wi-Fi network is a mixed 2.4GHz/5GHz network, try using AP pairing mode for better results.

A4: If you still have issues with your mixed network, you may need to access your router settings and/or call your Internet Service Provider to create a separate 2.4GHz network.

Q: None of my panels are lighting up, what should I do?

A1: Check that the power adapter is connected securely both to the controller and to a powered outlet. The LED indicator should illuminate if it is powered and paired to Wi-Fi.

A2: On the first panel, ensure that the **controller is on the RED side** of the connector and any **panels are on the GREEN sides**.

Q: Why are only some of my panels not lighting up?

A1: To ensure all panels light up, make sure all the connectors always point the GREEN side AWAY from the controller.

A2: If you've just added a panel, try turning Prism off and on again.

Q: What if the LED colors don't line up between panels?

A1: Pointing the directional arrows on the back of each panel towards or away from each other will create different lighting effects when panels are combined. Try rotating some panels.

NOTE: Take care to hold down neighboring panels when removing one. Always ensure all connections are secure.

Q: I've added add-on kits, why are the LEDs flickering?

A1: 1 Prism power kit can run up to 8 x Prism panels (1 x Starter Kit + 2 x Add-on Packs). Adding more than 8 x panels will require grouping in an additional power kit to maintain normal operation.

For other frequently asked questions please visit our website at www.monsterilluminescence.com

WARRANTY

1 Year Limited Warranty - Please read and understand all instructions before using this product. If damage is caused by failure to follow the instructions, this warranty is null and void.

SAFETY

• **Keep these instructions**

- Do not drop, puncture, or disassemble this product
- Do not install this product in any way other than what is outlined in this guide
- Do not attach this product to the ceiling or to the floor
- Do not install this product on unpainted brick, uneven/bumpy surfaces, or wallpaper
- Do not use this product in wet or very humid environments or expose to dripping or splashing liquids of any kind
- Do not immerse in water
- Avoid long exposure to direct sunlight, which may cause damage
- Do not use this product in small, enclosed locations that could limit the flow of air or trap excess heat
- Do not expose this product to open flames
- Do not use the product in a strong magnetic field
- Do not use this product for emergency lighting/exits
- Do not allow small children to operate, modify, or install this device unsupervised
- Use a clean, soft cloth to clean - do not use any corrosive cleaners/oils to clean



PATENT PENDING

The illustrated products and specifications may differ slightly from those supplied. The M Monster logo and IlluminEssence are trademarks or registered trademarks of Monster, Inc. or its subsidiaries in the U.S. and other countries and are used under license. Apple and the Apple logo are trademarks of Apple Inc., registered in the U.S. and other countries. App store is a service mark of Apple Inc. Google and Google Play are trademarks of Google LLC. Pre-set-up required. Amazon, Alexa, and all related logos are trademarks of Amazon.com, Inc. or its affiliates. All other brand names are trademarks of their respective owners. Neither Jern Accessories, Inc. nor Monster, Inc. is affiliated with the respective owners of their trademarks. Licensed and Manufactured by Jern Accessories, Inc. Edison, NJ 08817. Made in China.

FCC Compliance

This device complies with Part 15 of the FCC. Operation is subject to the following two conditions: (1) this device may not cause harmful interference, and (2) this device must accept any interference received, including interference that may cause undesired operation. Changes or modifications not expressly approved by the party responsible for compliance could void the user's authority to operate the equipment.

This equipment has been tested and found to comply with the limits for a Class B digital device, pursuant to part 15 of the FCC Rules. These limits are designed to provide reasonable protection against harmful interference in a residential installation. This equipment generates uses and can radiate radio frequency energy and, if not installed and used in accordance with the instructions, may cause harmful interference to radio communications. However, there is no guarantee that interference will not occur in a particular installation. If this equipment does cause harmful interference to radio or television reception, which can be determined by turning the equipment off and on, the user is encouraged to try to correct the interference by one or more of the following measures:

- Reorient or relocate the receiving antenna.
- Increase the separation between the equipment and receiver.
- Connect the equipment into an outlet on a circuit different from that to which the receiver is connected.
- Consult the dealer or an experienced radio/TV technician for help.

RF Exposure Statement

To satisfy FCC's RF exposure requirements, a separation distance of 20 cm or more should be maintained between the antenna of this device and persons during device operation. To ensure compliance, operations at closer than this distance is not recommended.

ISED/C Warning

This device complies with Innovation, Science, and Economic Development Canada license-exempt RSS standard(s). Operation is subject to the following two conditions:

- (1) this device may not cause interference, and
 - (2) this device must accept any interference, including interference that may cause undesired operation of the device.
- Le présent appareil est conforme aux CNR d'Innovation, Sciences et Développement économique Canada applicables aux appareils radio exempts de licence. L'exploitation est autorisée aux deux conditions suivantes:
- (1) l'appareil ne doit pas produire de brouillage, et
 - (2) l'utilisateur de l'appareil doit accepter tout brouillage radioélectrique subi, même si le brouillage est susceptible d'en compromettre le fonctionnement.

The device is compliance with RF exposure guidelines, users can obtain Canadian information on RF exposure and compliance. The minimum distance from body to use the device is 20cm.

Le présent appareil est conforme Après examen de ce matériel aux conformité ou aux limites d'intensité de champ RF, les utilisateurs peuvent sur l'exposition aux radiofréquences et la conformité et compliance d'acquérir les informations correspondantes. La distance minimale du corps à utiliser le dispositif est de 20cm.

1 YEAR LIMITED WARRANTY

Jem Accessories, Inc. Limited Warranty Policy for Monster Smart Products Last Updated: March 27, 2020

This limited warranty contains important information about your rights and obligations, as well as limitations and exclusions that may apply to you.

1. WHAT THIS LIMITED WARRANTY COVERS; PERIOD OF COVERAGE Jem Accessories, Inc. ("Jem Accessories"), 32 Brunswick Ave, Edison, New Jersey, USA, warrants to the owner of the enclosed Monster Smart-branded product contained in this box ("Product") will be free from defects in materials and workmanship for a period of one year. Notwithstanding the foregoing, the Warranty Period for a factory refurbished Product is one (1) year, even if installed by a professional. If the Product fails to conform to this Limited Warranty during the Warranty Period, Jem Accessories will, at its sole discretion, either (a) repair or replace any defective Product or component; with proof of purchase using original documentation. Repair or replacement may be made with a new or refurbished product or components, at Jem Accessories's sole discretion. If the Product or a component incorporated within it is no longer available, Jem Accessories may, at Jem Accessories's sole discretion, replace the Product with a similar product of similar function. This is your sole and exclusive remedy for breach of this Limited Warranty. Any Product that has either been repaired or replaced under this Limited Warranty will be covered by the terms of this Limited Warranty for the longer of (a) ninety (90) days from the date of delivery of the repaired Product or replacement Product, or (b) the remaining Warranty Period. This Limited Warranty is not transferable from the original purchaser to subsequent owners.

2. TOTAL SATISFACTION RETURN POLICY If you are the original purchaser of the Product and you are not

satisfied with this Product for any reason, you may return it in its original condition to the retailer in compliance with the retailer's return policy.

3. WARRANTY CONDITIONS; HOW TO GET SERVICE IF YOU WANT TO CLAIM UNDER THIS LIMITED WARRANTY Before making a claim under this Limited Warranty, the owner of the Product must (a) visit monsterilluminescence.com/support during the Warranty Period to provide notice of your warranty claim and describe the alleged failure, and (b) comply with Jem Accessories (or its authorized distributor's) return shipping instructions. Jem Accessories will have no warranty obligations with respect to a returned Product if it determines, at its reasonable discretion after examination of the returned Product, that the Product is an Ineligible Product (defined below). Jem Accessories will bear all costs of return shipping to owner and will reimburse any shipping costs incurred by the owner, except with respect to any Ineligible Product or products shipped internationally, for which the owner will bear all shipping costs.

4. WHAT THIS LIMITED WARRANTY DOES NOT COVER This Limited Warranty does not cover the following (collectively "Ineligible Products"): (i) Products marked as "sample" or "Not for Sale", or sold "AS IS"; (ii) Products that have been subject to: (a) modifications, alterations, tampering, or improper maintenance or repairs; (b) handling, storage, installation, testing, or use not in accordance with any quick start guide, manual or other instructions provided by Jem Accessories; (c) abuse or misuse of the Product; (d) breakdowns, fluctuations, or interruptions in electric power or the telecommunications network; or (e) Acts of God, including but not limited to lightning, flood, tornado, earthquake, or hurricane; or (iii) any non-Jem Accessories branded hardware products, even if packaged or sold with Jem Accessories hardware. This Limited Warranty does not cover consumable parts, including batteries, unless damage is due to defects in materials or workmanship of the Product, or software (even if packaged or sold with the product). Jem Accessories recommends that you use only authorized service providers for maintenance or repair. Unauthorized use of the Product or software can impair the Product's performance and may invalidate this Limited Warranty.

5. DISCLAIMER OF WARRANTIES Except as stated above in this limited warranty, and to the maximum extent permitted by applicable law, Jem Accessories disclaims all express, implied, and statutory warranties and conditions with respect to the product, including the implied warranties of merchantability and fitness for a particular purpose. To the maximum extent permitted by applicable law, Jem Accessories also limits the duration of any applicable implied warranties or conditions to the duration of this limited warranty.

6. LIMITATION OF DAMAGES In addition to the above warranty disclaimers, in no event will Jem Accessories be liable for any consequential, incidental, exemplary, or special damages, including any damages for lost data or lost profits, arising from or relating to this limited warranty or the product, and Jem Accessories's total cumulative liability arising from or related to this limited warranty or the product will not exceed the amount actually paid for the product by the original purchaser.

7. LIMITATION OF LIABILITY The Jem Accessories online services at monsterilluminescence.com ("services") provide you information ("product information") regarding your Jem Accessories products or other peripherals connected to your products ("product peripherals"). The type of product peripherals that may be connected to your product may change from time to time. Without limiting the generality of the disclaimers above, all product information is provided for your convenience, "as is", and "as available". Jem Accessories does not represent, warrant, or guarantee that product information will be available, accurate, or reliable or that product information or use of the services or product will provide safety in your home. You use all product information, the services, and the product at your own discretion and risk. You will be solely responsible for (and Jem Accessories disclaims) any and all loss, liability, or damages, including to your wiring, fixtures, electricity, home, product, product peripherals, computer, mobile device, and all other items and pets in your home, resulting from your use of the product information, services, or product. Product information provided by the services is not intended as a substitute for direct means of obtaining the information. For example, a notification provided through the service is not intended as a substitute for audible and visible indications in the home and on the product, nor for a third party monitoring service that monitors alarm state.

8. YOUR RIGHTS AND THIS LIMITED WARRANTY This Limited Warranty gives you specific legal rights. You may also have other legal rights that vary by state, province, or jurisdiction. Likewise, some of the limitations in this Limited Warranty may not apply in certain states, provinces or jurisdictions. The terms of this Limited Warranty will apply to the extent permitted by applicable law. For a full description of your legal rights you should refer to the laws applicable in your jurisdiction and you may wish to contact a relevant consumer advisory service.

If you need to start a warranty claim for your Monster Smart device, please reach out to Customer Support by emailing customerservice@monsterilluminescence.com or calling our support number 866-246-2008.

Please allow 7-10 business days to process warranty claims. Customers located outside of U.S. will be responsible for all shipping costs.